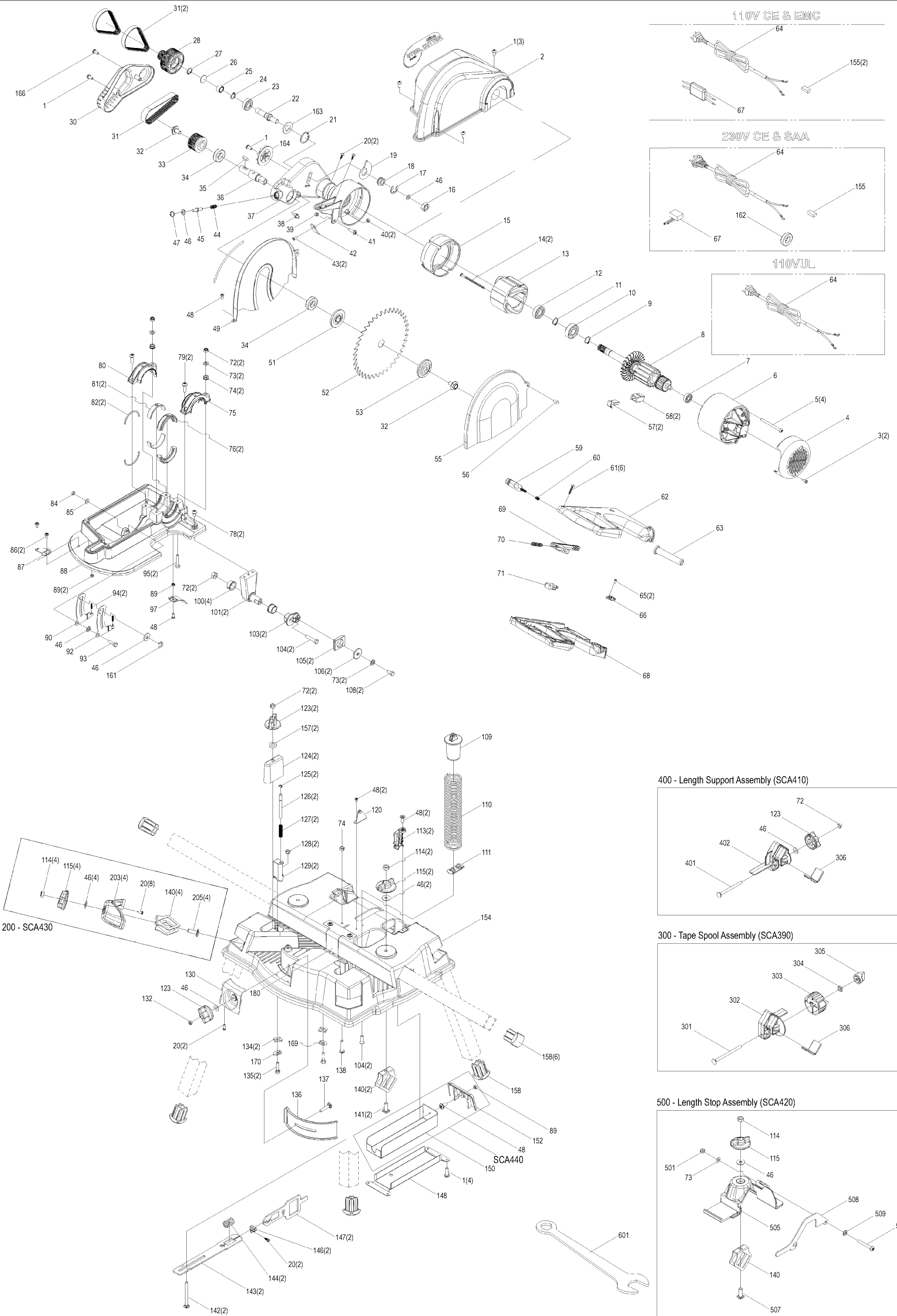
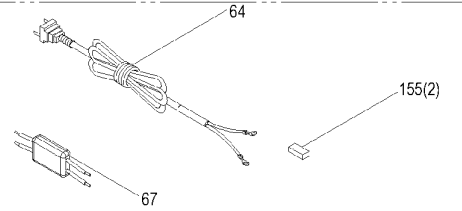


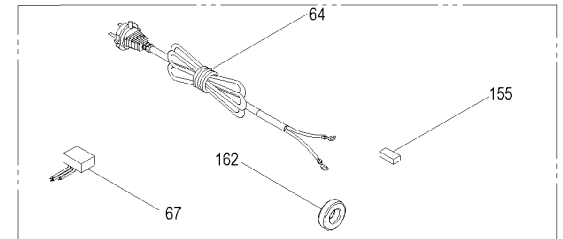
TRITON STEEL CUTTER SPARE PARTS LISTING



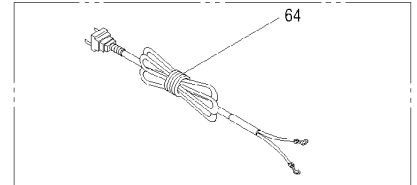
110V CE & EMC



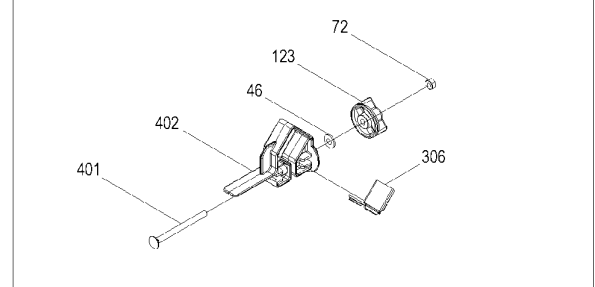
230V CE & SAA



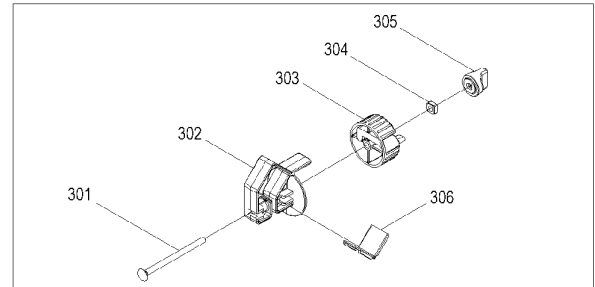
110VUL



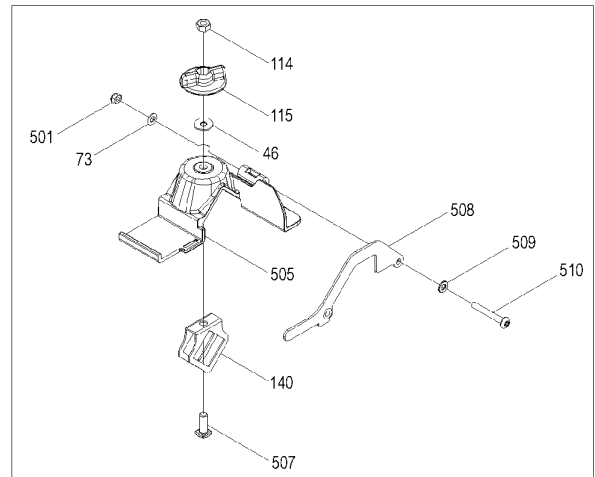
400 - Length Support Assembly (SCA410)



300 - Tape Spool Assembly (SCA390)



500 - Length Stop Assembly (SCA420)



200 - SCA430

SCA440

Item No.	Part No.	Description	Item No.	Part No.	Description
1	SCA151	M5 x 8 screw - pan head	89	SCA113	M4 nyloc nut
2	SCA121	Saw cover	90	SCA323	Primary arm lock
3	SCA244	M4 x 20 Self Tapping Screw	92	SCA325	Secondary arm lock
4	SCA247	Motor cap	93	SCA131	M5 shoulder bolt
5	SCA124	M4 x 90 screw - pan head	94	SCA321	Arm lock spring
6	SCA161	Motor housing	95	SCA249	M6 x 30 hex bolt
7	SCA171	Armature bearing	97	SCA137	Dust shield
8	SCA160	Armature	100	SCA101	Head pivot bush
9	SCA173	External retaining ring	101	SCA103	Head pivot
10	SCA172	Armature bearing	103	SCA139	Clamp crank
11	SCA173	C retainer	104	SCA133	M6 x 25 CSK bolt
12	SCA174	Armature bearing	105	SCA294	Crank bush
13	SCA170	Field assembly	106	SCA143	Crank washer
14	SCA128	D5 x 60 self tapping screw - pan head	108	SCA141	M6 x 15 hex bolt
15	SCA155	Fan shroud	109	SCA341	Main spring cap
16	SCA223	Lock nut - Belt tensioner	110	SCA343	Main spring
17	SCA225	E Clip external retaining ring	111	SCA303	Spring clamp
18	SCA221	Hex drive nut	113	SCA307	Rear pivot cap
19	SCA219	Belt tensioner	114&115	SCA400	Flat knob assembly
20	SCA165	M4 x 12 self tapping screw	120	SCA271	Lock down body
21	SCA248	Internal retaining ring (large) - Idler pulley	123	CMA040	Round knob - M6
22	SCA207	Idler shaft	124	SCA286	Clamp
23	SCA213	Bearing - Idler pulley	125	SCA295	E clip ETW-4
24	SCA217	External retaining ring - Idler pulley	126	SCA293	Push rod
25	SCA215	Needle rollers - Idler pulley	127	SCA299	Lock spring
26	SCA218	Shaft plug	128	SCA367	M5 square nut
27	SCA211	Internal retaining ring (small) - Idler pulley	129	SCA291	Lock body
28	SCA197	Pulley - output shaft	130	SCA253	Mitre clamp block
30	SCA167	Saw arm cover	134	SCA298	Lockout
31	SCA163	255mm multi 'V' belt	135	SCA369	10 A.F. x M5 hex shoulder bolt
32	SCA199	Saw bolt	136	SCA255	Mitre clamp slide
33	SCA209	Stepped idler pulley	137	SCA257	M6 x 35 coach bolt
34	SCA174	Bearing - output shaft	138	SCA252	M6 x 30 pan head philips
35	SCA201	Key - 5 x 25	140	SCA259	Square clamp
36	SCA191	Saw arm output shaft	141	SCA265	M8 x 24 square head bolt
37	SCA153	Saw arm	142	SCA288	M6 x 70 Coach bolt
38	SCA339	M6 Arm Lock Bolt	143	SCA281	Clamp slide
39	SCA188	M5 nyloc nut	144	SCA287	Crank spring
40	SCA126	M4 nut	146	SCA285	Crank guide
41	SCA112	M5 x 20 cap screw	147	SCA283	Crank end
42	SCA157	Lock out plate	148	SCA305	Drawer guide
43	SCA111	M4 x 10 CSK screw	150,151,152,153	SCA440	Drawer assembly
44	SCA232	Shaft lock spring	150	SCA311	Drawer
45	SCA337	Blade lock pin	152	SCA313	Drawer back
46	SCA338	Blade lock washer	154	SCA251	Saw base
47	SCA236	Shaft lock retaining ring	154A	SCA454	Safety glasses label
48	SCA117	M4 x 10 pan head philips	154B	SCA455	Clamp label
49	SCA147	Inside guard	155	SCA372	Terminal
51	SCA203	Blade Flange (inside)	157	SCA371	Clamp spacer
52	SCA184	Saw blade	158	SCA391	30mm leg plug
53	SCA205	Blade Flange (outside)	161	SCA295	E Clip - Arm lock
55	SCA145	Inside guard cover	162	SCA365	EMF filter
56	SCA148	Rivet	163	SCA366	Spacer washer
57	SCA181	Carbon brush	164	SCA376	Secondary fan
58	SCA183	Brush holder	166	SCA392	M5 x 25 pan head philips
59	SCA237	Release button	169	SCA378	Right clamp washer
60	SCA239	Release spring	170	SCA379	Left clamp washer
61	SCA243	M4x22 self tapping screw	180	SCA363	Sighting plate
62	SCA229	Handle top	200	SCA430	Leg clamp assembly
63	TRA018	Cord relief	203	SCA261	Clamp cover
64	SCA373	Plug & cord	205	SCA265	M8 x 24 square head bolt
65	SCA244	M4 x 20 self tapping screw	300	SCA390	Tape spool assembly
66	SCA106	Wire clamp	301	SCA383	M6 x 90 coach bolt
68	SCA227	Handle bottom	302	SCA375	Tape end stop
69	SCA233	Trigger	303	SCA377	Tape end mount
70	SCA241	Trigger spring	304	SCA381	M6 square nut
71	SCA231	Micro switch	305	SCA382	Knob - small
72	SCA256	M6 nyloc nut	306	SCA385	Shim bent
73	SCA122	M6 washer	400	SCA410	Length support assembly
74	SCA119	M6 flange nut	401	SCA387	M6 x 75 coach bolt
75	SCA125	Large cap	402	SCA355	Length stop support
76	SCA109	Bush (Right hand)	500	SCA420	Length stop assembly
78	SCA127	M6 x 15 cap screw	501	SCA256	M6 nyloc nut
79	SCA149	M6 x 20 pan head philips	505	SCA351	Length stop body
80	SCA115	Small cap	507	SCA265	M8 x 24 square head bolt
81	SCA107	Bush (Left hand)	508	SCA353	Flip stop
82	SCA108	Felt seal	509	SCA122	M6 washer
84	SCA188	M5 nyloc nut	510	SCA388	M6 x 45 pan head philips
85	SCA122	M6 washer	601	SCA395	Blade spanner
86	SCA296	M4 x 10 special head philips	701	SCA374	Manual
87	SCA301	Head hold down	703	SCA456	Carton
88	SCA105	Base guard	704	SCA399	Measuring Tape